



International Yacht Club of BC
IYC SEMIAHMOO BAY REGATTA
April 28th & 29th, 2018
SAILING INSTRUCTIONS

1 RULES

- 1.1 The regatta will be governed by the rules as defined in the ISAF Racing Rules of Sailing, 2017-2020.
- 1.2 The prescriptions of the Canadian Yachting Association will apply.
- 1.3 The rules for each Division as defined in these Sailing Instructions as applicable include the rules of PHRF of BC, the event Notice of Race and these Sailing Instructions.

2 ELIGIBILITY

- 2.1 Boats may register directly with IYC, using the registration form available on the IYC Regatta website at www.iycbc.ca
- 2.2 Boats competing in Divisions A, B, C, D must have a valid PHRF-BC certificate or a valid PHRF-NW certificate and must submit a copy of the certificate on request. Those without a certificate, or those wishing to enter the Cruising Division, will be in Division E - Cruising, white sails only.
- 2.3 Each participating boat shall be insured with adequate valid third-party liability insurance. A copy of this certificate must be carried on board at all times.

3 NOTICES TO COMPETITORS

- 3.1 Notices to competitors will be broadcast on Channel 72 after 9 am on each race day.

4 CHANGES TO SAILING INSTRUCTIONS

- 4.1 Any change to the sailing instructions will be broadcast on Channel 72 after 0900 on each race day, except that any change to the schedule of races will be posted by 2000 on the day before it will take effect.

5 SIGNALS MADE ASHORE

- 5.1 Signals will not be made ashore.

6 COMMUNICATIONS

- 6.1 Should the Race Committee need to communicate with competitors, it shall do so via VHF radio using channel 72. All competitors are to monitor VHF channel 72 at all times on race day.
- 6.2 A decision to change, shorten or abandon a course or race will be announced twice on VHF channel 72 and repeated again twice approximately 15 minutes later. Flags will not be used. This changes RRS 27.3 and 32.
- 6.3 A decision to postpone a race will be communicated by means of flags and sounds.

- 6.4 Boats on the course side at the start will be recalled with one sound and a hail on VHF channel 72, as well as by flag. Failure of the OCS boat to hear the hail shall not be grounds for redress under RRS 62.1(a). This changes RRS 29.1
- 6.5 A General Recall will be called with two sounds and a hail on VHF channel 72 as well as by flag. This changes RRS 29.2

7 SCHEDULE OF RACES

- 7.1 One distance race is scheduled for all divisions on Saturday.
- 7.2 Two or more races are scheduled on Sunday for all divisions.
- 7.3 The scheduled time of the warning signal for the first race each day is 10:00 hours.
- 7.4 On Sunday, subsequent races will start as soon as practical following completion of the previous race.

8 DIVISIONS AND DIVISION FLAGS

- 8.1 Divisions are defined as follows:

<i>Division</i>	<i>Division Flag</i>	<i>Rating</i>
Division A	Orange Flag	Multi-hull Division - All Ratings
Division B	Red Flag	PHRF 109 and less
Division C	White Flag	PHRF 110 to 175
Division D	Yellow flag	PHRF 176 and over
Division E	Blue Flag	Cruising Division – all ratings – no flying sails (white sails only)

9 RACING AREA

- 9.1 Racing will take place in the vicinity of Semiahmoo Bay.

10 THE COURSES

- 10.1 On Saturday for all divisions, the distance course to be sailed is described in Appendix A and the accompanying chartlet.
- 10.2 On Sunday each division will sail courses described in Appendix B unless otherwise communicated by the Race Committee.

11 MARKS

- 11.1 All marks will be rounded to port.
- 11.2 On Saturday the start/finish mark will be a yellow inflatable marker.
- 11.3 On Saturday, marks for the distance courses are described in Appendix A.
- 11.4 On Sunday the starting mark “S” will be a yellow inflatable marker and the finishing mark “F” will be an orange inflatable marker.
- 11.5 On Sunday, all marks will be yellow inflatable markers (except the finishing mark will be an orange inflatable marker).

12 THE START

- 12.1 The first scheduled race each day will be a rolling start (the start signal for the Division will be the Warning signal for the next Division), unless otherwise communicated by the Race Committee

12.2 Racers will be alerted to a start sequence by the use of 3 blasts on the horn one minute prior to the Warning signal.

12.3 Races shall be started by using ISAF Racing Rules 26, as follows:

Warning	Division Flag up; 1 sound	5 minutes before start
Preparatory	Preparatory Flag up; 1 sound	4 minutes before start
One Minute	Preparatory Flag down; 1 long sound	1 minute before start
Starting	Division Flag down; 1 sound	Start

12.4 The starting line will be between a staff displaying the blue Race Committee Boat flag on the Race Committee vessel and nearby mark "S".

12.5 Boats whose warning signal has not been made shall avoid the starting area.

12.6 The starting area is an area 100m in any direction from the starting line.

13 CHANGE OF THE NEXT LEG OF THE COURSE

13.1 Once set, marks will not be changed for the duration of that race. The race may be shortened.

14 THE FINISH

14.1 Saturday:

14.1.1 For all divisions the finishing line will be between a staff displaying the blue Race Committee Boat flag on a race committee boat and a nearby yellow inflatable mark.

14.1.2 In the event the long or medium courses are shortened this may be done at a mark on the course announced by the Race Committee.

14.2 Sunday:

14.2.1 For all divisions, the finishing line will be between a staff displaying the blue Race Committee Boat flag on a race committee boat and a nearby orange inflatable mark.

15 Purposely left blank

16 TIME LIMITS

16.1 The time limit for all divisions on Saturday shall be 16:30 unless otherwise advised by the Race Committee on VHF radio Channel 72.

16.2 The time limit for each race on Sunday for all divisions shall be 2 hours.

16.3 Yachts not finishing within the time limits above will be scored DNF. This changes Rule 35.

17 PROTESTS AND REQUESTS FOR REDRESS

17.1 Boats intending to Protest shall advise the Race Committee when crossing the finish line.

17.2 Boats protesting shall deliver the protest forms to the IYC Race Director at iycbc.racing@gmail.com. Forms are available at the IYC website: www.iycbc.ca

17.3 Protests shall be filed with the Race Committee within the protest time limit. The time limit for submitting the written protest shall be midnight Monday April 30, 2018.

17.4 Protests will be heard in the order received as soon as practical following the protest time limit.

18 SCORING

18.1 The As Sailed Time Correction Factor (TCF) on the submitted PHRF-BC or PHRF-NW will be used for correcting the times recorded; no conversions will be made. A Division E boat requiring a temporary rating should contact the club handicapper, Roger Bragg at rajeh@telus.net and Race Director iycbc.racing@gmail.com.

- 18.2 Scoring will be calculated using the Time on Time format as defined by PHRF-BC. The High Point System described attached will apply.
- 18.3 A minimum of one race must be completed for the overall division winners to be declared. A boat's regatta score will be the total of her race scores.

19 SAFETY REGULATIONS

- 19.1 All boats must comply with 2017 PIYA Safety Equipment Requirements NEARSHORE, except multihull boats racing by their one design class rules.
- Boats may be inspected at any time at the request of the Race Committee
 - The 2017 PIYA Equipment Requirements are available on the IYC website.
 - The requirements apply to ALL vessels, regardless of which Division is entered.
- 19.2 Prior to the first scheduled warning signal of each day for the first starting division, all boats must check in with the race committee by HAILING the Race Committee Boat at the start line. Check in by VHF radio will not be accepted.
- 19.3 A boat that retires from a race shall notify the race committee as soon as possible on VHF radio channel 72.

20 PRIZES

- 20.1 Results and Awards will be awarded Sunday at Blaine Boating Center.

21 DISCLAIMER OF LIABILITY

- 21.1 Competitors participate in the regatta entirely at their own risk. See Rule 4, Decision to Race. The organizing authority will not accept any liability for material damage or personal injury or death sustained in conjunction with or prior to, during, or after the regatta.

Appendix A - Courses for Saturday:

Divisions shall start in the order A, B, C, D, and E unless otherwise communicated by the Race Committee on Race Day; this will be done on VHF radio Channel 72.

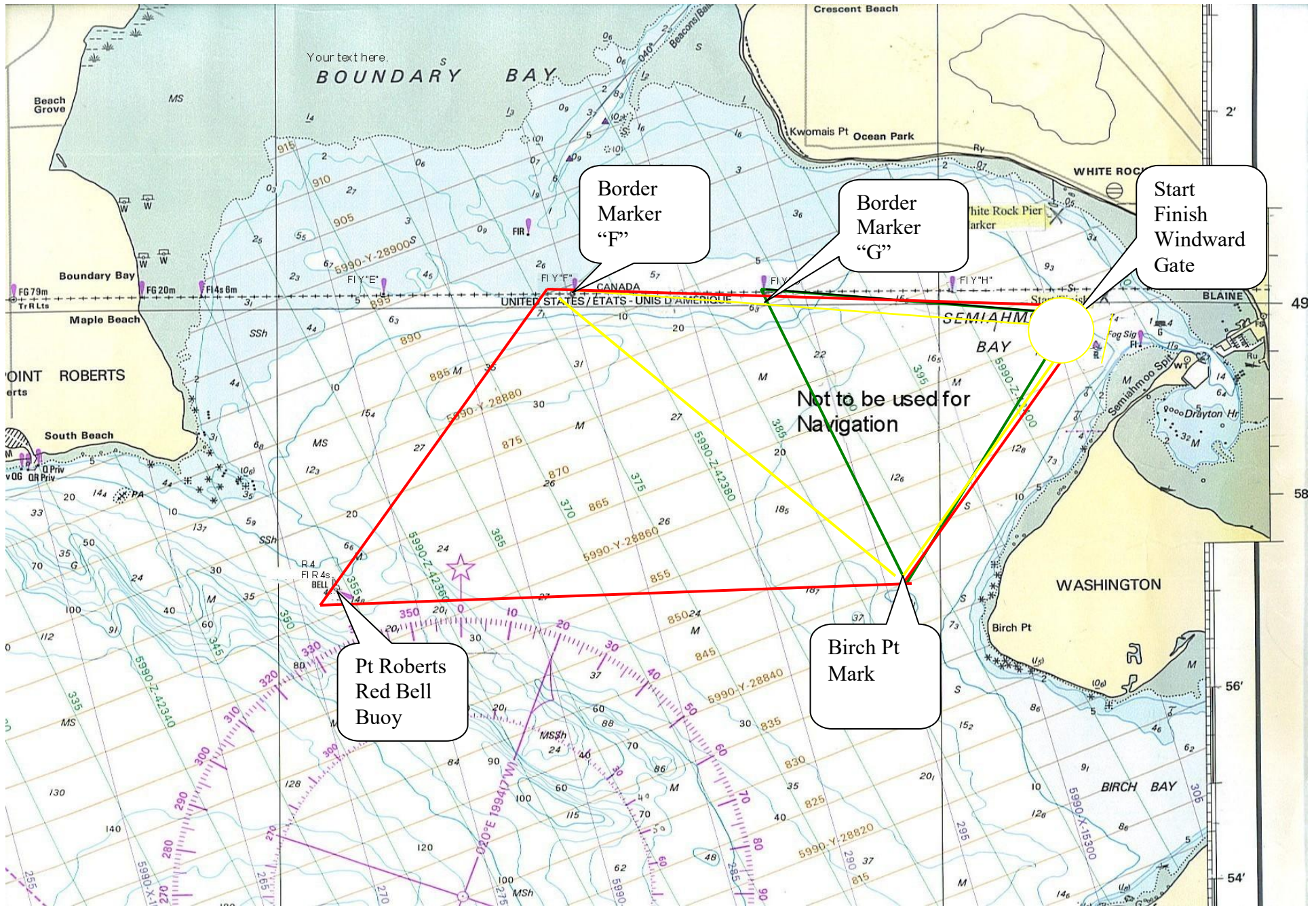
Marks are to be rounded to port in the following order for the fixed distance courses:

Divisions A, B, C, (Note 1)	Mark Location	Approximate Coordinates About 17.5 nm
Start Line (S)	South of International Border	48.59.76N 122.48.26W
Gate	Windward of start	
Fl Y "F" Mark	Boundary Bay	49.00.13N 122.55.50W
Point Roberts Red Bell buoy "4"	SE of Point Roberts	48.57.10N 122.59.20W
Yellow Inflatable Marker	W of Birch Point	48.57.48N 122.50.65W
Finish Line (F)	South of International Border	48.59.76N 122.48.26W

Division D (Note 1)	Mark Location	Approximate Coordinates About 13.0 nm
Start Line (S)	South of International Border	48.59.76N 122.48.26W
Gate	Windward of start	
Fl Y "F" Mark	Boundary Bay	49.00.13N 122.55.50W
Yellow Inflatable Marker	W of Birch Point	48.57.48N 122.50.65W
Finish Line (F)	South of International Border	48.59.76N 122.48.26W

Division E – Cruising (Note 1)	Mark Location	Approximate Coordinates About 10.5 nm
Start Line (S)	South of International Border	48.59.76N 122.48.26W
Gate	Windward of Start	
Fl Y "G" Mark	S of Kwomais Point	49.00.13N 122.52.64W
Yellow Inflatable Marker	W of Birch Point	~48.57.48N 122.50.65W
Finish Line (F)	South of International Border	48.59.76N 122.48.26W

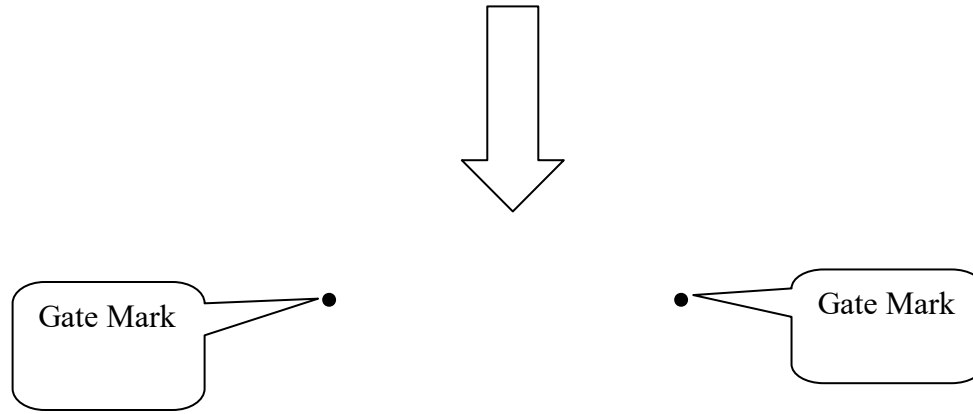
Note 1: Each Division shall start separately.



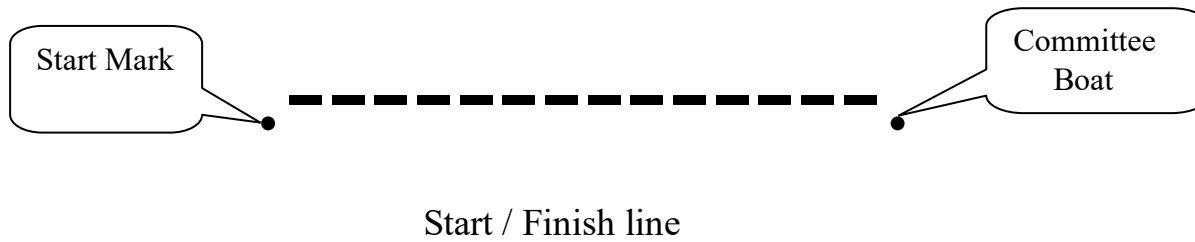
IYCBC SBIRegatta 2017 SI v1.0

Windward Gate

Wind

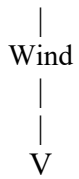


NOTE: Not to Scale



Appendix B

Courses for Sunday:

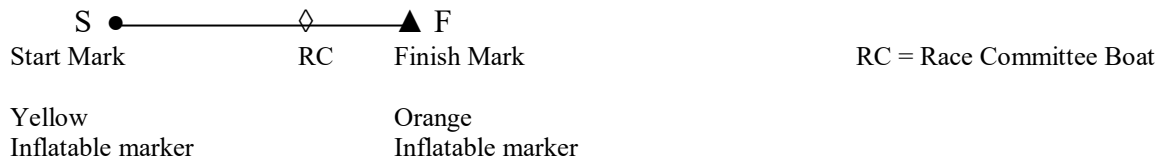


- Windward Mark 1 ----- (Round Yellow Inflatable marker)

- Mark 2 ----- (Round Yellow Inflatable marker)

NOTE: Not to Scale

- Mark 3 ----- (Round Yellow Inflatable Marker)



Division	Marks to be rounded in order; all marks to port:
A, B, C, D	Start – 1 – 3 – 1 – Finish
E	Start – 1 – 2 – 1 – Finish

For the first race the Divisions shall start in the order A, B, C, D, and E unless otherwise communicated by the Race Committee on Race Day; this will be done on VHF radio Channel 72.

IYC Series High Point Scoring

"High-Point Percentage Scoring" system to be adopted for the Series.

- 1 Let n be the number of boats in a single division that compete in the race. (Boats must have registered through IYC for the race or the series to be deemed to have competed in the event.)
2. The points awarded to a boat for her result in an event are determined as follows:
 - a) The first place boat receives n gross points; the second place boat $n - 1$ points, the third place boat $n - 2$ points, and so on, down to the last place boat.
 - b) A boat's gross points are divided by n to give her net points for the event.

In this way, net scores are based on the number of boats ahead on corrected time. For example: If five boats in a particular division compete in and finish an event.

<i>21.2 Finish</i>	<i>Points Awarded</i>
1st	$(n-0) = 5 / 5 = 1.0$
2nd	$(n-1) = 4 / 5 = 0.8$
3rd	$(n-2) = 3 / 5 = 0.6$
4th	$(n-3) = 2 / 5 = 0.4$
5th	$(n-4) = 1 / 5 = 0.2$

3. All boats that are registered but do not compete (DNC) receive zero points for the event.
4. All boats that compete but do not finish (DNF), are disqualified (DSQ) or are scored over-early (OCS), receive $1/n$ points (the same points as a last-place finish).
5. Boat registered but not racing because they are on official race duties (OOD) will be scored at their average score for the series.